

## SPARE PARTS EXPLODED VIEW GAS-WALL CONDENSING BOILERS

Model

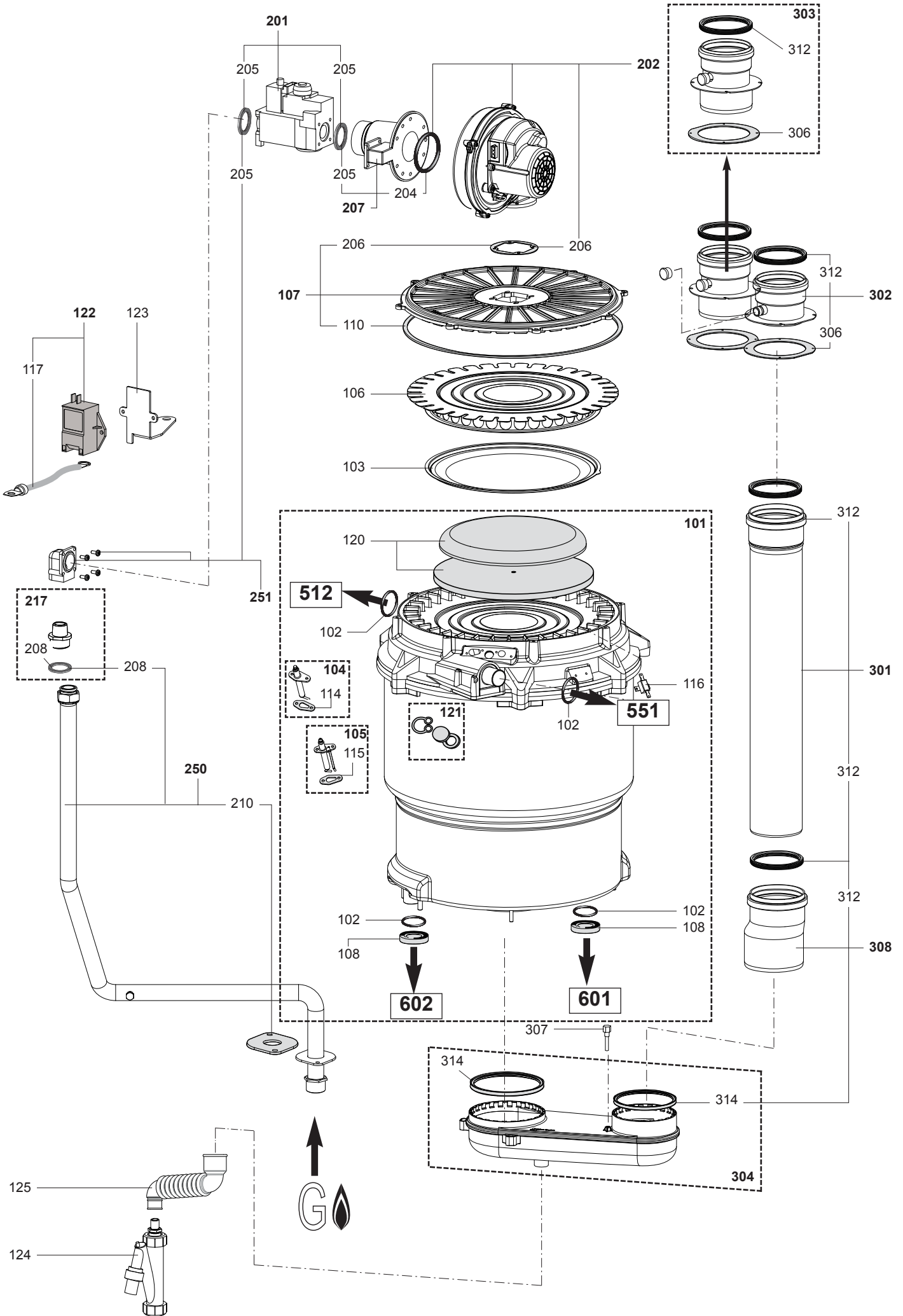
### R40 EVO/IP

R8217480-01 - 01/06/2016

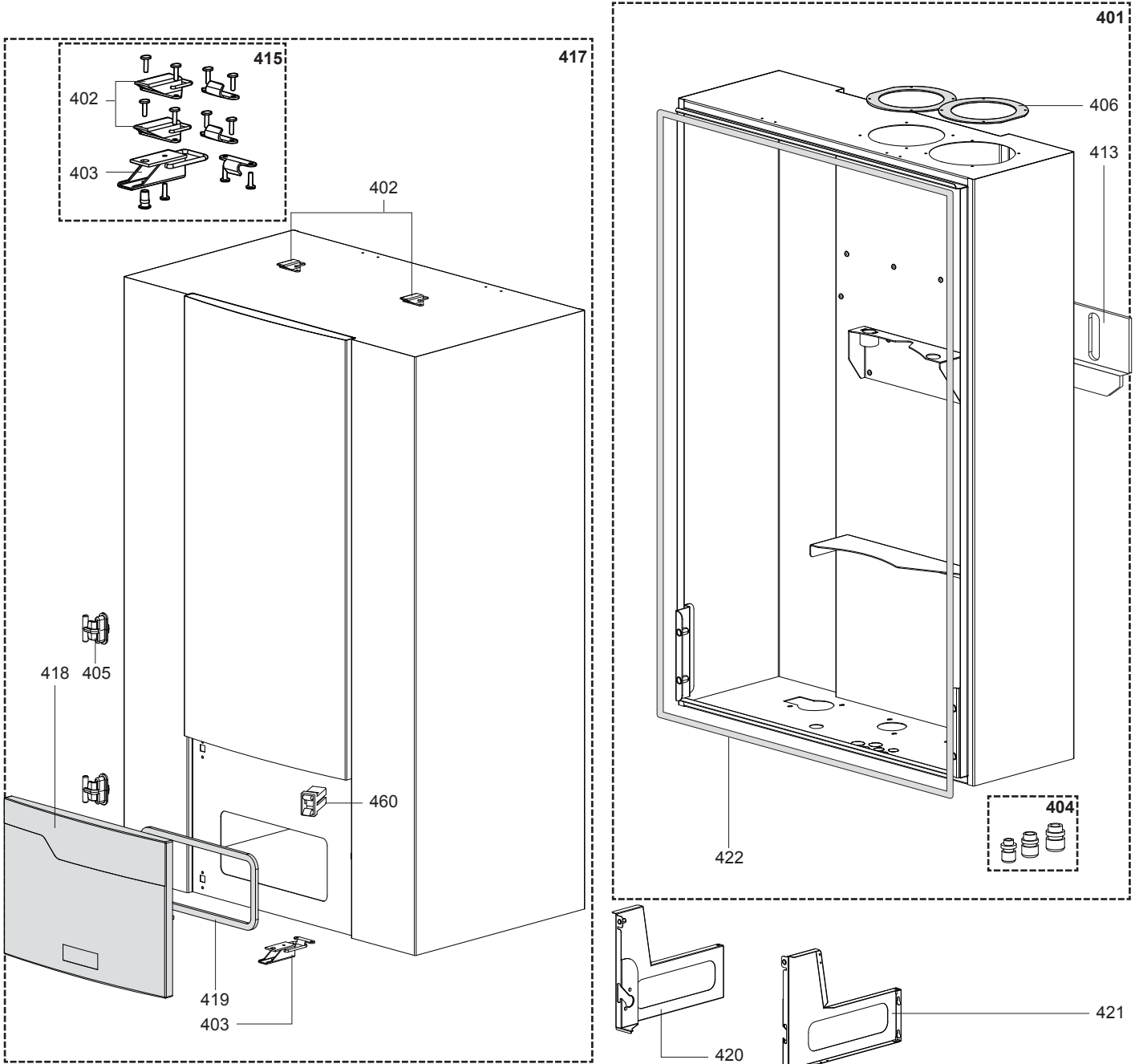
1	3581599	R40 EVO 60	04-2016	-
2	3581600	R40 EVO 70	04-2016	-
3	3581601	R40 EVO 80	04-2016	-
4	3581602	R40 EVO 100	04-2016	-
5	3581603	R40 EVO 120	04-2016	-
6	3581604	R40 EVO 140	04-2016	-
7	3581625	R40 EVO 60 IP	04-2016	-
8	3581626	R40 EVO 70 IP	04-2016	-
9	3581627	R40 EVO 80 IP	04-2016	-
10	3581628	R40 EVO 100 IP	04-2016	-
11	3581629	R40 EVO 120 IP	04-2016	-
12	3581630	R40 EVO 140 IP	04-2016	-
Col	Reference	Model type	Begin	End



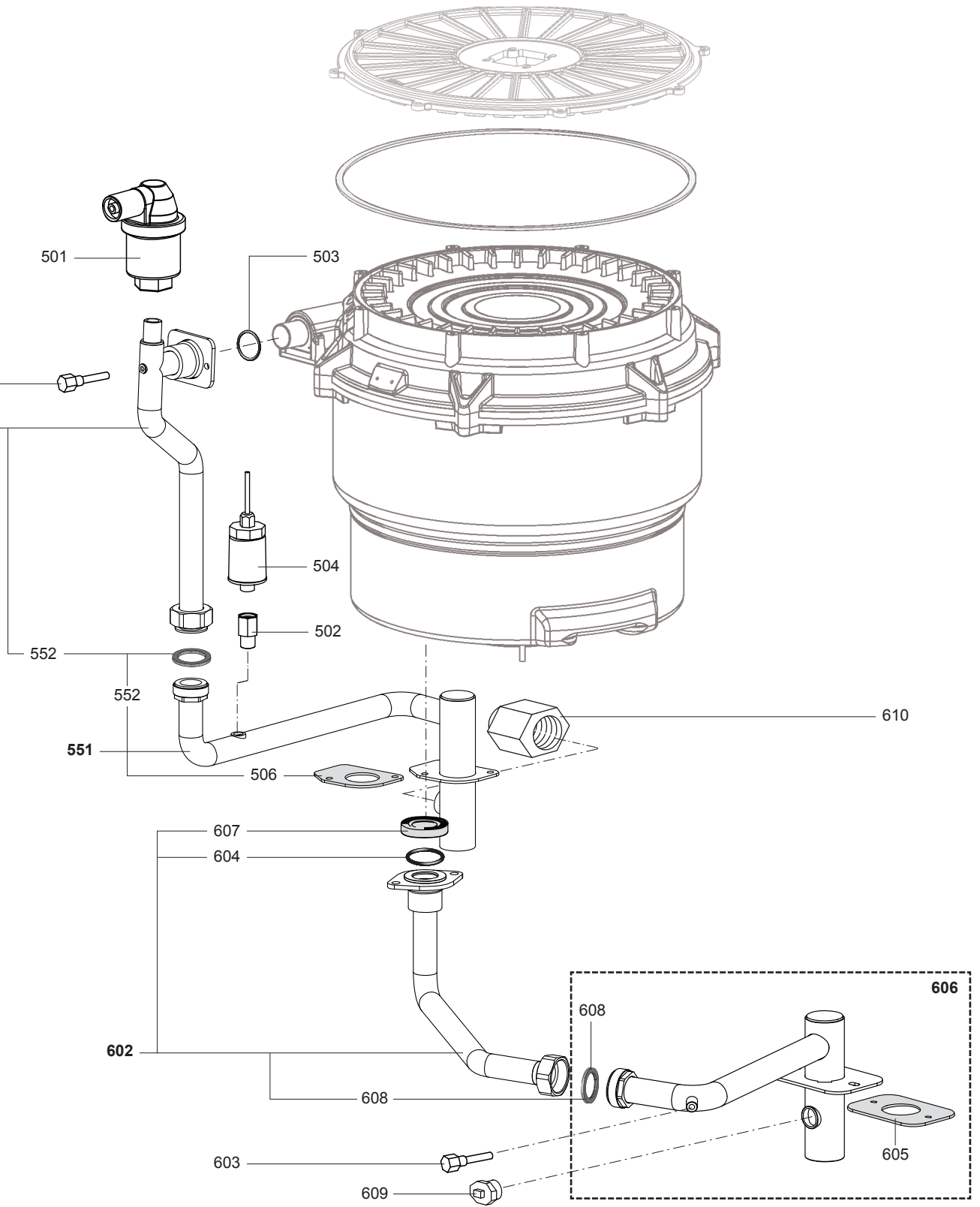






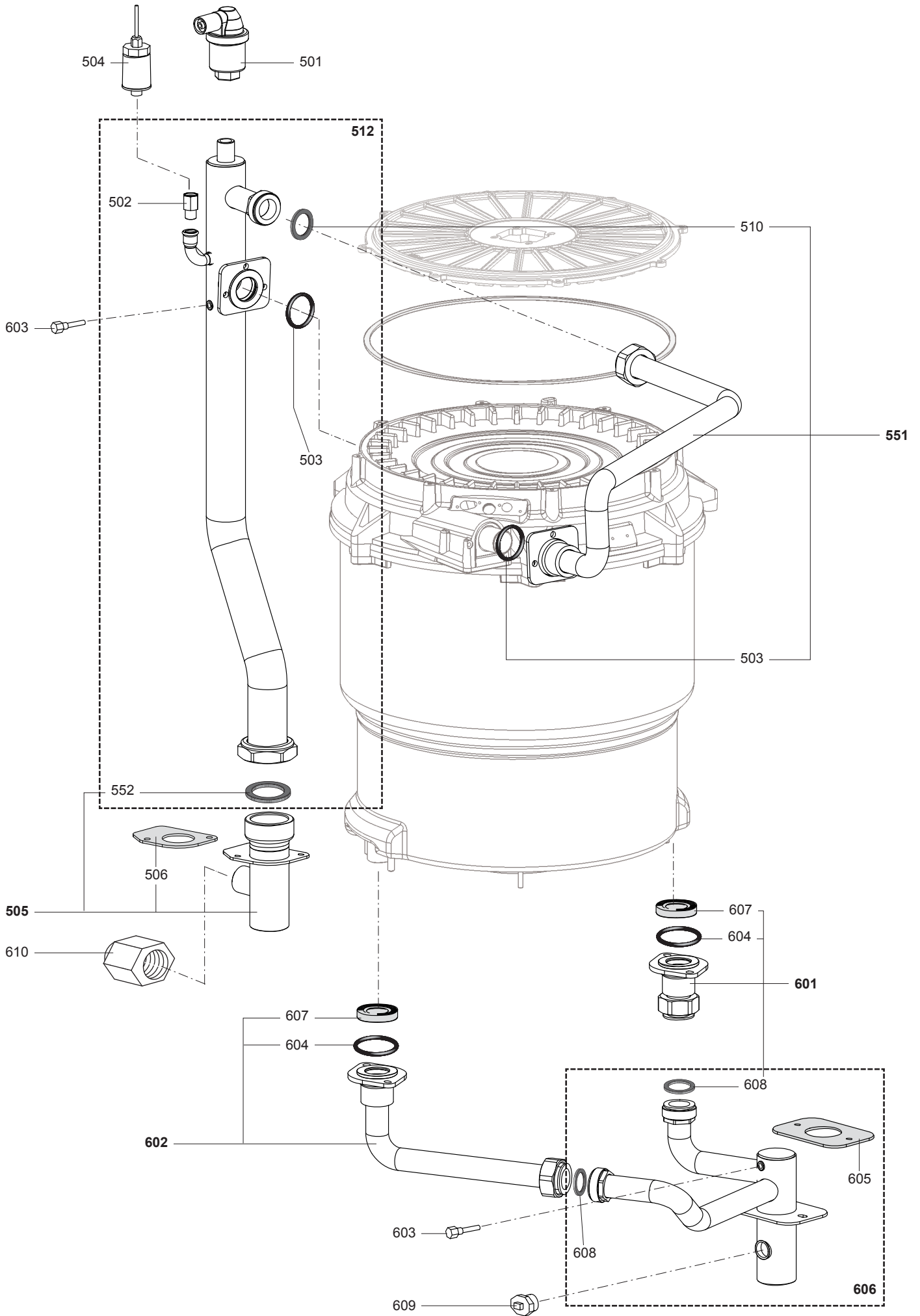




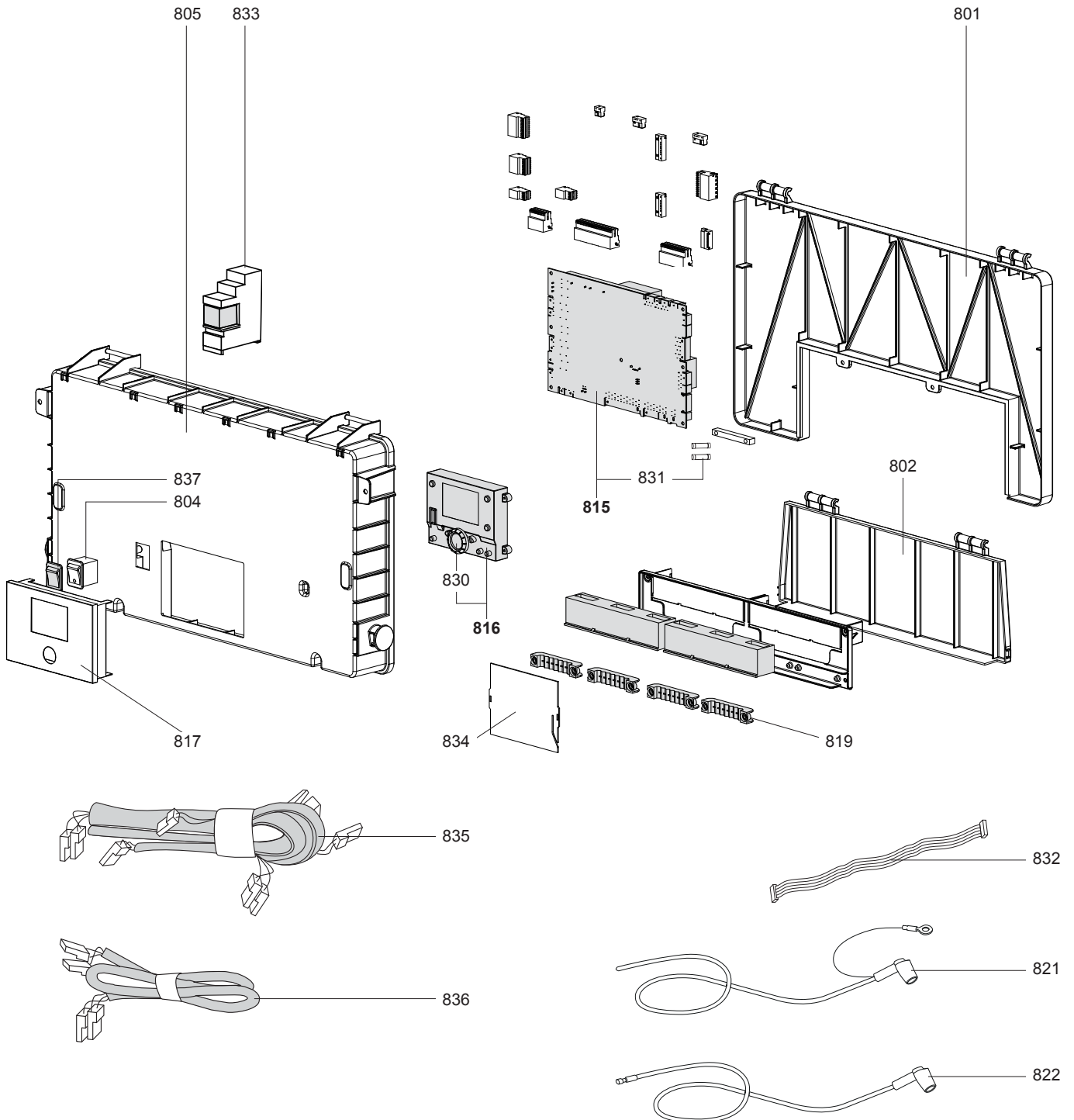














## LIST OF THE ABBREVIATIONS

HW .....	: Hot water.
CW .....	: Cold water.
C .....	: Ceramic resistance (normal heating).
Ca .....	: Ceramic resistance (accelerated heating)
TP .....	: Immersion heater.
1F .....	: With fittings.
2F .....	: Without fittings.
3F .....	: With fittings and another outlet connection.
AMI .....	: With mixing valve.
SMI .....	: Without mixing valve.
PUISS .....	: Power of th appliance.
PN .....	: Appliance with normal pression.
LP .....	: Appliance with low pression.
PV .....	: Appliance with variable power.
PF .....	: Appliance with fixed power.

## IDENTIFICATION PLATE

### SERIAL NUMBER

<b>10 Characters :</b>	04 05 125 011		
		Sequential number	
		Manufacturing day	
		Year of manufacture	
<b>11 Characters :</b>	1 95 065004 - 31		
Month of manufacture :		Technical number of the appliance	
from 1 to 9 → Jan. to Sep.,		Sequential number	
O → Oct., N → Nov.,		Year of manufacture	
D → Dec.			
<b>19 Characters :</b>	08 05 0013199 900640031		
Year of manufacture		Product reference	
Month of manufacture		Sequential number	
<b>20 Characters :</b>	3675007 XX 2 07 070 00315		
Product reference		Sequential number	
Millenium of manufacture		Manufacturing day	
		Year of manufacture	
<b>21 Characters :</b>	3675007 XX 07 070 0000315		
Product reference		Sequential number	
Year of manufacture		Manufacturing day	